

60 & 60W GunJet[®] Spray Gun

USER GUIDE



Spraying Systems Co.[®]
Experts in Spray Technology

MI-60 & 60W
spray.com

CONTENTS

CONTENTS.....	2
INTRODUCTION.....	3
WARNINGS & PRECAUTIONS	3
INSTALLATION.....	6
MAINTENANCE.....	7

INTRODUCTION

The Model 60 series GunJet® is a heavy-duty, impact resistant spray gun with a sturdy nylon handle and trigger guard. The Model 60 GunJet is a high-pressure spray gun, which remains responsive and easy to operate even at maximum flow and capacity conditions. The light trigger pull provides positive control. The heat resistant handle remains comfortable even at high temperatures. A special trigger lock feature locks in the “off” position to prevent accidental discharge and retracts flush into the handle when the gun is in use. The Model 60W incorporates a continuous “weep” feature to minimize the change of freezing and, with the exception of the valve seat subassembly, the 60 and 60W GunJet spray guns are identical and require the same installation and operating procedures. The Model 60 and 60W GunJet spray guns will accommodate standard Spraying Systems Co. accessories for both the inlet and the outlet connections within the accessories’ pressure and temperature limitations.

Features of the Model 60-GunJet spray guns:

- Operating pressure range up to 2500 psi (173 bar).
- Flow capacities to 6 gpm (23 l/min) with 90 psi (6 bar) pressure drop.
- Maximum recommended temperature 300°F (150° C).
- Single piece, forged brass inlet body (for 60 & 60W).
- Stainless steel inlet body (for 60 SS & 60W SS).
- Stainless steel shut-off needle.
- Bronze-filled PTFE valve seat.
- Viton stem seal with PTFE back-up ring.
- Short hand grip (handle to trigger).



WARNINGS & PRECAUTIONS

IMPORTANT: READ ALL INSTRUCTIONS BEFORE USING SPRAY GUN

THIS IS A HIGH-PRESSURE DEVICE WHICH SHOULD ONLY BE USED IN A PROPERLY ENGINEERED SYSTEM. THIS SPRAY GUN SHOULD BE OPERATED ONLY BY TRAINED OPERATORS AND KEPT OUT OF REACH OF CHILDREN. PLEASE READ THE FOLLOWING INSTRUCTION SHEETS BEFORE ATTEMPTING TO OPERATE THE MODEL 60 HIGH PRESSURE GUNJET SPRAY GUN.

HEED ALL THESE WARNINGS or serious and permanent injury may result.

1. **DO NOT** aim gun at any person or any part of the body. Fluids under high pressure can penetrate the human skin and can cause severe injury, possibly resulting in amputation or death. Hot liquids and chemicals can also cause burns or injury. If any part of the body comes in contact with the spray stream, immediately consult a physician.
2. **DO NOT** at any time place hands or any other part of the body in front of spray nozzle or tip.
3. **DO NOT** alter equipment in any manner; if repairs are necessary, use only genuine factory repair parts supplied by Spraying Systems Co.
4. **DO NOT** exceed maximum operating pressure of the lowest rated accessory item within the spray system even though some of the accessories have a higher maximum pressure rating.
5. **DO NOT** leave equipment under pressure unattended at any time. Relieve pressure by shutting off power to pump, turning off the liquid supply to the pump, and actuating Trigger until all fluid ceases to flow; then position Trigger Lock to the locked position.
6. **DO NOT** use damaged, perforated, or weakened fluid hose.
7. **DO NOT** use a GunJet with a faulty or damaged Trigger Lock.
8. **DO NOT** operate a spray gun if there are any leaks from the packings, fittings, hoses, etc. Fluids that are under high pressure can penetrate skin, cloth, etc., and cause serious injury.
9. **DO NOT** touch any metal parts of the gun or accessories when spraying hot liquids or severe injury can occur.
10. **DO NOT** handle a spray gun without a tip or nozzle any differently than one with a tip or nozzle. Even with the tip or nozzle removed, the spray gun can discharge a large volume of liquid at a high velocity.

SAFETY SHOULD ALWAYS BE OBSERVED:

1. **DO** use a two-handed control of Model 60 GunJet at all times. Grasp spray gun firmly with both hands. If an extension is used, grasp the extension. (Insulated extension if spraying hot liquids.)
2. **DO** adopt a secure body stance prior to and during spray operation to safely control the high reactionary force of this unit.
3. **DO** impress on other people in the spraying area the importance of obeying strict safety precautions for everyone's safety.
4. **DO** develop a habit of shutting off the power to the pump, relieving fluid pressure from gun and hose by actuating trigger until all fluid ceases to flow, and setting the Trigger Lock in the locked position, before attempting to remove the tip, nozzle, gun or any part of the gun, or when gun is not in use.
5. **DO** check operation of Trigger Lock before each spray period. Trigger Lock must hold the Trigger to its forward position. (Adjust if necessary; see section Trigger Adjustment Procedure.)
6. **DO** carefully check and tighten threaded connections regularly. Make them secure and leak proof.
7. **DO** flush gun after each spray period using the same safety precautions as used during spraying operations. Always use the lowest possible pressure for flushing.
8. **DO** keep gun clean and dry to allow for positive grip.
9. **DO** use GunJet in a well-ventilated area and make sure spray gun is grounded properly when used in a possibly explosive or inflammable environment. A grounded-type hose should be used.

IMPORTANT: In case of the slightest appearance of skin penetration from spray, CONSULT A PHYSICIAN IMMEDIATELY!

INSTALLATION

1. Before installing GunJet® to hose, select WashJet® tip or, if desired, an appropriate extension and WashJet nozzle for your application. Install on gun with nozzle positioned for your particular spraying needs and tighten.
2. Make sure all power is turned off to the pump. Attach GunJet to high-pressure hose with rating to meet or exceed the maximum operating pressure to be used. When spray gun is being used in a possible explosive or flammable environment, a grounded-type hose should be used.
3. Follow your pump and component parts manufacturer's recommendations for operation, but in any case, do not exceed the pressure or temperature of the lowest rated component within the system.
4. Make sure all power to the pump is turned off and there is no pressure in any part of the system. Examine all connections, making sure they are of the proper type and are secure.
5. Before turning on the pump hold the GunJet in downward vertical position pointed away from body and familiarize yourself with the operation of the Trigger Lock (21).
6. Make sure Trigger Lock (21) is in locked position. Do not turn on the pump power or operate spray gun if Trigger Lock is not operating properly.

MAINTENANCE

With proper care, your Model 60 series GunJet® will give you reliable service. To maintain this performance, parts should be inspected regularly and replaced when necessary with genuine Spraying Systems Co. parts.

DISASSEMBLY PROCEDURE:

(See Figure 1 and parts list PL 60 & 60W, PL B60 & B60W or PL 60-3/8-SS)

If it becomes necessary to disassemble this unit, follow these steps:

1. Make sure all air, electrical, and liquid lines to the pump are turned off.
2. Release all the pressure and liquid (from the hose to GunJet) by operating Trigger until fluid ceases to flow.
3. Set Trigger Lock (21) in locked position.
4. Remove gun from hose.
5. Remove 7 Screws (1).
6. Remove Right Hand Housing (2), Trigger Lock (21) and Lock Spring Ring (20).
7. Remove Body and Trigger as a subassembly (3) thru (19) from Left Hand Housing (2).
8. Remove Trigger (18) and Trigger Guide (19).
9. Remove #6 Burr (15), Spring (14), Stem Nut (13).
10. Using the hex on the Body (5) as a back-up wrenching surface, loosen Cap (3) and Packing Screw (12).
11. Remove Cap (3) and Valve Seat (4).
12. Holding Packing Screw (12) unscrew Body (5) from Stem Assembly (6) thru (12).
13. Remove Gasket (11) from Packing Screw (12).
14. Remove Packing Screw (12), Cup Packing (9), Washer (8), and Main Spring (7).
15. If required, Trigger Guide (19) may be removed from Trigger (18) by pressing or driving out Roll Pin (16).
16. If required, Roll Pin (17) may be removed from Trigger (18) by pressing or driving out.

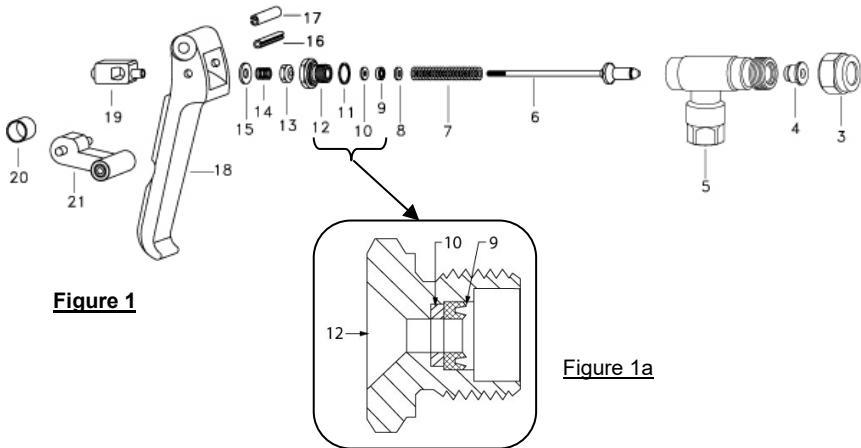


Figure 1

Figure 1a

ASSEMBLY PROCEDURE:

(See Figure 1 and parts list PL 60 & 60W, PL B60 & B60W or PL 60-3/8-SS)

1. Install Main Spring (7) over Main Stem (6).
2. Install Washer (8) onto Main Stem (6).
3. If Cup Packing (9) and Back-up Ring (10) were not previously removed from Packing Screw (12) apply a drop of light oil on Cup Packing and carefully thread Packing Screw (12) over threads of Main Stem (6).
4. If Cup Packing (9) and Back-up Ring (10) were previously removed from Packing Screw (12) slide Packing Screw (12) and Back-up Ring (10) onto Main Stem (6). Apply a thin coat of light oil on Cup Packing (9) and with flat side of Cup Packing (9) facing Trigger (18) carefully screw Cup Packing over threads of Main Stem (6). **Important: Cup Packing (9) must be installed in correct direction (see Figure 1a).**
5. Install Valve Seat (4) and Cap (3) loosely onto Body (5).
6. Insert stem assembly into Inlet Body (5); begin to thread Packing Screw (12) into Inlet Body (5).
7. Tighten Cap (3) and Packing Screw (12).
8. Assemble Trigger (18), Trigger Guide (19) and Roll Pin (16) and (17) if previously disassembled. Roll Pin (16) slot should face toward threaded end of Trigger Guide (19). Lubricate area where Roll Pin (16) contacts Trigger Guide (19) with white grease or equivalent.

9. Thread flat side of hex Stem Nut (13) onto threaded end of Main Stem (6) until approximately 3/16" of threaded stem projects from recessed surface of Stem Nut (13).
10. Install #6 Burr (washer) (15), Spring (14), and end of Main Stem (6) which has hex Stem Nut (13) onto Trigger Guide (19). Do not allow hex Stem Nut (13) to drift from preset position on Main Stem (6).
11. Tighten hex Stem Nut (13) using a back-up wrench on the flats of Trigger Guide (19).
12. Place Body Trigger Assembly (3) thru (19) in Left Hand Housing (2) making sure Roll Pin (17) is engaged in hole in Left Hand Housing (2).
13. Install Lock Spring Ring (20) in Left Hand Housing (2).
14. Place Trigger Lock (21) in Left Hand Housing (2).
15. Install Right Hand Housing (2) and 7 Screws (1).
Caution: Do not over tighten screws.
16. Be sure Trigger Lock (21) is in locked position before attaching to pump.

REPLACEMENT OF PACKING CUP (9):

Steps 1 through 14 of Disassembly Procedure and steps 1 through 16 of Assembly Procedure.

TRIGGER ADJUSTMENT PROCEDURE:

When correctly adjusted there should be no Stem (6) travel when Trigger Lock (21) is in the locked position and trigger operation is attempted. A visual check can be made by detecting no Stem Nut (13) movement. Adjust Main Stem (6) to engage Trigger Guide (19) approximately 3/16" which should result in 1/8" to 5/32" of stem travel when mounted in plastic housing. (See steps 9, 10, and 11 of Assembly Procedure.)

DATA SHEETS

ITEM	PART NO.	DESCRIPTION
1	CP17103-11/16-302SS	Screw, Type 302, Stainless Steel (7 Req'd)
2	CP19683-NYB	Right and Left Hand Housing Set, Nylon (Black)
3	CP7980-1NF	Cap, Steel, Nickel Plated
*	CP17710-1-BR8TEF	Valve Seat Sub-Assembly, 60% Bronze Filled Teflon (For Model #60-3/8)
5	CP17710-1-BR8TEF	Valve Seat Sub-Assembly, 60% Bronze Filled Teflon (For Model #60W-3/8)
*	CP17706	Body, Brass
*	50470-SS	Stem Sub-Assembly, Type 302 Stainless Steel
*	CP17715-302SS	Main Spring, Type 302 Stainless Steel
8	CP50468-SS	Washer, Stainless Steel
*	CP14285-1-VI	Cup Packing, Viton
10	CP17712-TEF	Back Up Ring, Teflon
*	CP17717-AL	Gasket, Aluminum
11	CP17718	Packing Screw, Brass
13	CP7484-SS	Stem Nut, Stainless Steel
14	CP7489-302SS	Trigger Stop Springs, Type 302 Stainless Steel
15	CP7622-302SS	#6 Burr, Type 302 Stainless Steel
16	CP17720-420SS	Roll Pin, Type 420 Stainless Steel
17	CP17688-420SS	Roll Pin, Type 420 Stainless Steel
18	CP17703-NY	Trigger, Nylon (Gray)
19	CP19810	Trigger Guide, Brass
20	CP17719-1-CE	Lock Spring Ring, Calson
21	CP17704-NY	Trigger Lock, Nylon (Gray)
	50420	Sub-Assembly (Includes Items 8 Thru 15 & 19)
	No. A460-3/8, GunJet® Spray Gun	
	No. A460W-3/8, GunJet® Spray Gun - With "Wasp" Feature	
	AB60-K1 - Spare Parts Kit (Includes all items marked with *, 17710 of Item 4 only)	
	AB60W-K1 - Spare Parts Kit (Includes all items marked with *, 17710-1 of Item 4 only)	

ITEM	PART NO.	DESCRIPTION
1	CP17103-11/16-302SS	Screw, Type 302, Stainless Steel (7 Req'd)
2	CP19683-NYB	Right and Left Hand Housing Set, Nylon (Black)
3	CP7980-1NF	Cap, Steel, Nickel Plated
4	CP17710-1-BR8TEF	Valve Seat Sub-Assembly, 60% Bronze Filled Teflon (For Model #60-3/8)
5	CP17710-1-BR8TEF	Valve Seat Sub-Assembly, 60% Bronze Filled Teflon (For Model #60W-3/8)
6	50470-SS	Stem Sub-Assembly, Type 302 Stainless Steel
7	CP17715-302SS	Main Spring, Type 302 Stainless Steel
8	CP50468-SS	Washer, Stainless Steel
9	CP14285-1-VI	Cup Packing, Viton
10	CP17712-TEF	Back Up Ring, Teflon
11	CP17717-AL	Gasket, Aluminum
12	CP17718	Packing Screw, Brass
13	CP7484-SS	Stem Nut, Stainless Steel
14	CP7489-302SS	Trigger Stop Springs, Type 302 Stainless Steel
15	CP7622-302SS	#6 Burr, Type 302 Stainless Steel
16	CP17720-420SS	Roll Pin, Type 420 Stainless Steel

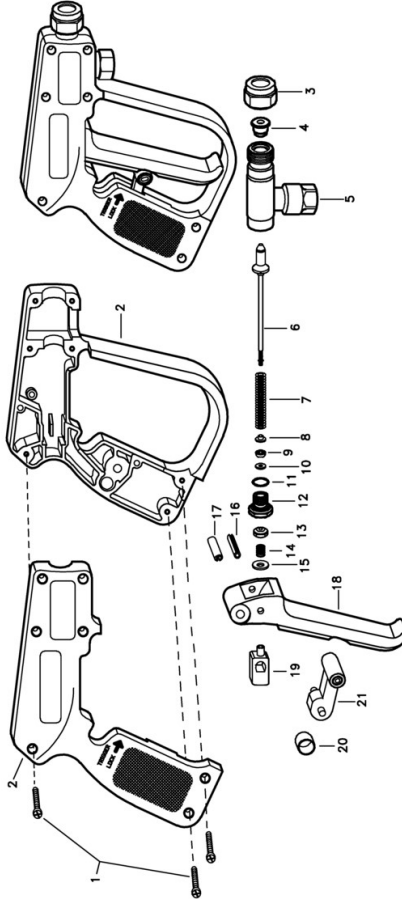
DESCRIPTION:
AA 60-3/8 And A460W-3/8 GunJet® Spray Guns

Rev. No. 3

Paris List No. PL 80, 80W

SHEET OF

Spraying Systems Co.®
Spray Nozzles and Accessories
P.O. Box 7900 - Watson, E. 60187-7901



ITEM	PART NO.	DESCRIPTION
1	CP17103-1/16-30ZSS	Screw, Type 302 Stainless Steel (7 Req'd)
2	CP19683-NYB	Right and Left Hand Housing Set, Nylon (Black)
3	CP7890-SS	Cap, Stainless Steel
4	CP17710-BRTEF	Valve Seat Sub-Assembly, 60X Bronze Filled Teflon (For Model #860-3/8)
5	CP17710-T-BRTEF	Valve Seat Sub-Assembly, 60X Bronze Filled Teflon (For Model #860W-3/8)
6	50470-SS	Stem Sub-Assembly, Type 302 Stainless Steel
7	CP17715-30ZSS	Main Spring, Type 302 Stainless Steel
8	CP17716	Seal Retainer, Brass
9	CP14255-1-VI	Cup Packing, Viton
10	CP17712-TEF	Back Up Ring, Teflon
11	CP17717-AL	Gasket, Aluminum
12	CP17718	Packing Screw, Brass
13	CP7484-SS	Stem Nut, Stainless Steel
14	CP7489-30ZSS	Trigger Stop Spring, Type 302 Stainless Steel
15	CP7622-30ZSS	#6 Burr, Type 302 Stainless Steel
16	CP17720-420SS	Roll Pin, Type 420 Stainless Steel

ITEM	PART NO.	DESCRIPTION
17	CP17889-420SS	Roll Pin, Type 420 Stainless Steel
18	CP17703-NY	Trigger, Nylon (Gray)
19	CP17707	Trigger Guide, Brass
20	CP17719-1-CE	Lock Spring Ring, Calcon
21	CP17704-NY	Trigger Lock, Nylon (Gray)

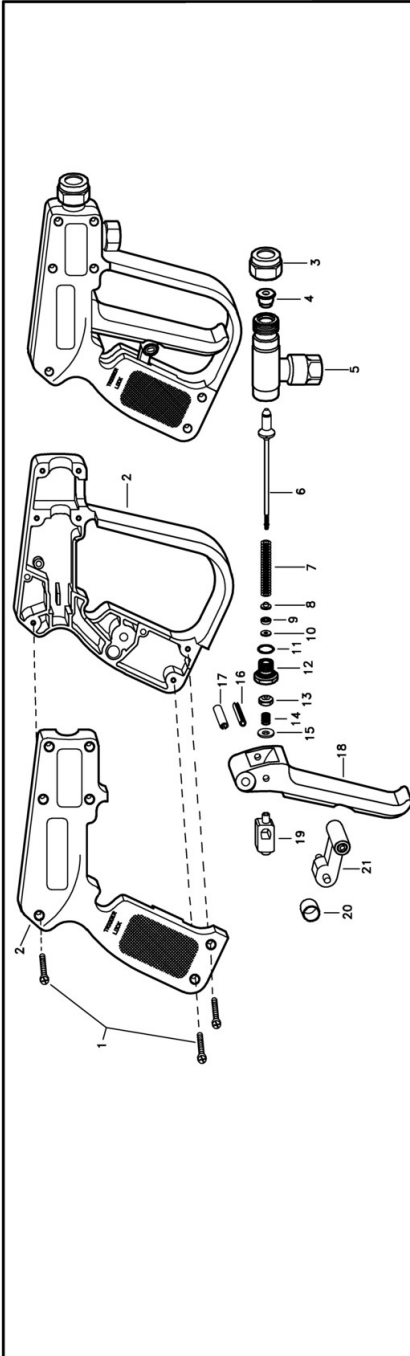
No. AAB60-3/8, GunJet® Spray Gun
 No. AAB60W-3/8, GunJet® Spray Gun - With "Weep" Feature
 AAB60-Kit - Spare Parts Kit (includes all items marked with *, 17710 of item 4, only)
 AAB60W-Kit - Spare Parts Kit (includes all items marked with *, 17710-1 of item 4 only)

DESCRIPTION:
 AAB60-3/8 And AAB60W-3/8
 GunJet® Spray Gun
 (With 3/8" BPT Inlet Conn.)

Spraying Systems Co.
 Spray Nozzles and Accessories
 P.O. Box 7900 - Wheaton, IL 60187-7901

Parts List No.
PL 860, B60W
 OF SHEET

Rev. No. 2
 Ref.



ITEM	PART NO.	DESCRIPTION
17	CP17689-420SS	Roll Pin, Type 420 Stainless Steel
18	CP17703-NY	Trigger, Nylon (Gray)
19	CP19810-SS	Trigger Guide, 303 Stainless Steel
20	CP17719-1-CE	Lock Spring Ring, Celcon
21	CP17704-NY	Trigger Lock, Nylon (Gray)
50420		Sub-Assembly (Includes Items 6 Thru 17 & 19)
No. AA60-3/8-SS, GunJet® Spray Gun		
No. AA60W-3/8-SS, GunJet® Spray Gun - With "Weep" Feature		
No. AA860-3/8-SS, GunJet® Spray Gun		
No. AA860W-3/8-SS, GunJet® Spray Gun - With "Weep" Feature		

ITEM	PART NO.	DESCRIPTION
1	CP17103-11/16-302SS	Screw, Type 302 Stainless Steel (7 Req'd)
2	CP19663-NYB	Right and Left Hand Housing Set, Nylon (Black)
3	CP7890-SS	Cap, Stainless Steel
4	CP17710-SSSTEF	Valve Seat Sub-Assembly, Stainless Steel-Filled Teflon (For #60-3/8-SS & #B60-3/8-SS)
	CP17710-1-SSSTEF	Valve Seat Sub-Assembly, Stainless Steel-Filled Teflon (For #60W-3/8-SS & #B60W-3/8-SS)
5	CP21112-SS	Inlet Body Sub-Assembly, Stainless Steel (For #60-3/8-SS & #60W-3/8-SS)
	CPB21112-SS	Inlet Body Sub-Assembly, Stainless Steel (For #B60-3/8-SS & #B60W-3/8-SS)
6	50470-SS	Main Spring, Type 302 Stainless Steel
7	CP17715-302SS	Shem Sub-Assembly, Type 302 Stainless Steel
8	CP50468-SS	Washer, Stainless Steel
9	CP14255-1-VI	Cup Packing, Viton
10	CP17712-TEF	Back Up Ring, Teflon
11	CP17717-302SS	Gasket, Type 302 Stainless Steel
12	CP17718-SS	Packing Screw, Stainless Steel
13	CP7484-SS	Shem Nut, Stainless Steel
14	CP7489-302SS	Trigger Stop Spring, Type 302 Stainless Steel
15	CP7622-302SS	#6 Burr, Type 302 Stainless Steel
16	CP17720-420SS	Roll Pin, Type 420 Stainless Steel

AA60-SS-K11 - Spare Parts Kit (Includes all items marked with *)

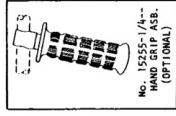
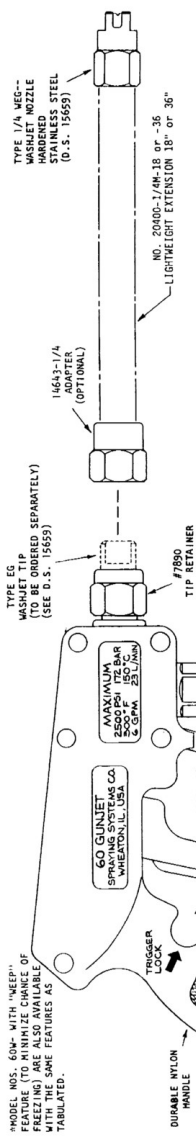
Spraying Systems Co.
 Spray Nozzles and Accessories
 P.O. Box 7600 - Wheaton, IL 60187-7601

DESCRIPTION:
 AA60-3/8-SS, AA860-3/8-SS,
 AA60W-3/8-SS & AA860W-3/8-SS
 GunJet® Spray Guns

Rev. No. 5
 Ref. _____

Parts List No.
PL 60-3/8-SS
 SHEET
 OF _____

*MODEL NOS. 60W- WITH "WEEP"-
 TYPE EG. NOZZLES (SEE FIG. 1) AND
 FEEDING) ARE ALSO AVAILABLE
 WITH THE SAME FEATURES AS
 TABULATED.



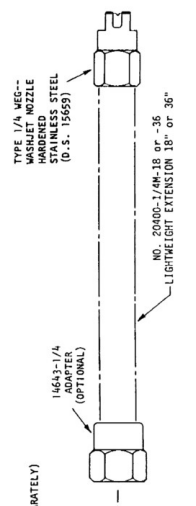
*HANDLE NOS. 60 & 60W GUNJET SPRAY GUNS,
 ARE ALSO SUPPLIED WITH 3/8\"/>

MODEL NO. #	INLET CONN. **	OUTLET CONN.	OVERALL LENGTH
60-3/8	3/8" NPT (F) OR 3/8" BSPT (F)	1/16" THD. (M) TO FIT 7890 GRIP	8-3/4" (222 mm)

WARNING

READ INSTRUCTION SHEET IN-60 BEFORE USING SPRAY GUN. HIGH PRESSURE SPRAYS AND HOT LIQUID SPRAYS CAN CAUSE SERIOUS BODILY INJURY. EXERCISE EXTRA CARE AND CAUTION WHEN HANDLING GUN. GRASP IT FIRMLY WITH BOTH HANDS ON HANDLE. ADOPT PROPER BODY STANCE TO ANTICIPATE REACTION THRUST OF SPRAY GUN. NEVER PUT YOUR HAND OR BODY IN LINE OF ORBIT OF GUN. DO NOT POINT GUN AT OTHERS. WHEN NOT USING GUN KEEP TRIGGER LOCK IN LOCKED POSITION.

BEFORE REMOVING SPRAY TIP OR NOZZLE, SHUT OFF PUMP, RELIEVE FLUID PRESSURE FROM SYSTEM BY RETRACTING TRIGGER TO "ON" POSITION UNTIL ALL FLUID CEASES TO FLOW.
 WHEN SPRAYING HOT LIQUIDS, OPERATOR MUST BE CAUTIOUS TO AVOID BODY CONTACT WITH THE NON-INSULATED PARTS OF GUN, EXTENSION, ETC....



NO. 60 GUNJET FEATURES

- HEAVY DUTY - DESIGNED TO WITHSTAND HIGH IMPACT AND ROUGH USAGE.
- SMOOTH AND EASY TO OPERATE - LIGHT AND PORTABLE - POSITIVE FEEL - MAINTAINED AND CONTROLLED. EVEN UNDER MAXIMUM DESIGN OPERATING FLOW AND PRESSURE CONDITIONS.
- HANDLE REMAINS COMFORTABLE DURING HOT SPRAYING OPERATIONS UP TO 300° F (150°C)
- HANDLE GRIP DESIGNED FOR GLOVED OR UN-GLOVED HAND.
- NYLON STEEL SEAL WITH TEFLON BACK-UP RING.
- BRONZE-FILLED TEFLON VALVE SEAT.
- STAINLESS STEEL SHUT-OFF NEEDLE.
- SINGLE PIECE BRASS FORGED VALVE BODY.
- TRIGGER LOCK RETRACTS FLUSH IN HANDLE WITH DETENT HOLD.
- SHORT HAND GRIP (HANDLE TO TRIGGER).
- PRESSURES UP TO 2500 PSI (172 Bar).
- FLOW RATES UP TO 6 GPM (23 L/MIN.) - PRESSURE DROP AT 6 GPM (23 L/MIN.) IS 90 PSI (6 Bar).
- MAXIMUM TEMPERATURE - 300°F(150°C).
- OUTER CASING WITH TRIGGER GUARD MOLDED OF HIGH IMPACT NYLON MATERIAL.
- WILL ACCOMMODATE STANDARD SS CO. ACCESSORIES FOR BOTH THE INLET AND OUTLET CONNECTIONS. (SEE LIST OF ACCESSORIES PRESSURE LIMITATIONS) SUCH AS: EXTENSION, SWIVELS, STRAINERS AND ADAPTERS.
- WEIGHT - 1 LB. (0.45 kg)
- OVERALL HEIGHT - 6-1/2" (165 mm)

DESCRIPTION: NO. 60 HIGH PRESSURE GUNJET SPRAY GUN

18208

Date Sheet No.

Rev. No. 4

SHEET OF

Spraying Systems Co.
 Spray Nozzles and Accessories
 P.O. Box 7800 - Wheaton, IL 60189-7800

TYPE EG. WASHJET TIP (TO BE ORDERED SEPARATELY) (SEE D.S. 15659)

14643-1/4-SSP ADAPTER (OPTIONAL)

TYPE 1/4" MEEPTL SPRAY NOZZLE HARDENED STEEL (OPTIONAL-SEE D.S. 15655)

NO. 20400-1/4M-18-SS OR -36-SS LIGHTWEIGHT EXTENSION 18" OR 36" (OPTIONAL-SEE D.S. 20400)

MAXIMUM 2500 PSI (17.2 MPa) 8.5 GPM (321 L/min)

GO GUNJET SPRAY SYSTEMS CO. WILMINGTON, IL, U.S.A.

TRIGGER LOCK

DURABLE NYLON HANDLE

TRIGGER LOCK LOCKS TRIGGER IN OFF POSITION

LIQUID INLET CONN.

DURABLE NYLON TRIGGER GUARD

#7890-SS TIP RETAINER

NO. 15255-1/4-SS TIP RETAINER (OPTIONAL)

NO. 60-3/8-SS GUNJET FEATURES:

- HEAVY DUTY . . . DESIGNED TO WITHSTAND HIGH IMPACT AND ROUGH USAGE.
- SMOOTH AND EASY TO OPERATE . . . TRIGGER PULL WITH POSITIVE FEEL, MAINTAINED AND CONTROLLED, EVEN UNDER MAXIMUM DESIGN OPERATING FLOW AND PRESSURE CONDITIONS.
- HANDLE REMAINS COMFORTABLE DURING HOT SPRAYING OPERATIONS UP TO 300° F (150°C).
- HANDLE GRIP DESIGNED FOR GLOVED OR UN-GLOVED HAND.

ALL WETTED PARTS ARE MADE OF STAINLESS STEEL, VITON, OR TEFLON FOR BETTER CORROSION RESISTANCE INCLUDING:

- VITON STEM SEAL WITH TEFLON BACK-UP RING
- STAINLESS STEEL FILLED TEFLON VALVE SEAT
- STAINLESS STEEL SHUT-OFF NEEDLE

● TRIGGER LOCK RETRACTS FLUSH IN HANDLE WITH DETENT HOLD.

● SMOOTH HAND GRIP (HANDLE TO TRIGGER).

● PRESSURES UP TO 2500 PSI (17.2 Bar).

● FLOW RATES UP TO 6 GPM (23 L/min), 15-30 PSI (1.0 Bar) TO 8 GPM (23 L/min), 15-90 PSI (1.0 Bar).

● MAXIMUM TEMPERATURE - 300°F (150°C).

● OUTER CASING WITH TRIGGER GUARD MOLDED OF HIGH IMPACT NYLON MATERIAL.

● WILL ACCOMMODATE STANDARD SS CO. ACCESSORIES FOR BOTH THE INLET AND OUTLET CONNECTION (WITHIN THE ACCESSORIES PRESSURE LIMITATIONS) SUCH AS: EXTENSION, SWIVELS, STRAINERS AND ADAPTERS.

● WEIGHT - 1-1/4 LB. (.7 kg)

● OVERALL HEIGHT - 6-1/2" (165 mm)

WARNING

READ INSTRUCTION SHEET M1-60-3/8-SS BEFORE USING SPRAY GUN. HIGH PRESSURE SPRAYS AND HOT LIQUID SPRAYS CAN CAUSE SERIOUS BODILY INJURY. ALWAYS EXERCISE EXTRA CAUTION WHEN HANDLING GUN. GRASP IT FIRMLY WITH BOTH HANDS AND ALWAYS USE PROPER BODY STANCE TO ANTICIPATE REACTION THIRST OF SPRAY. NEVER PUT YOUR HAND OR BODY IN FRONT OF ORIFICE. DO NOT POINT GUN AT OTHERS. WHEN NOT USING GUN KEEP TRIGGER LOCK IN LOCKED POSITION. BEFORE REMOVING SPRAY TIP OR NOZZLE, SHUT OFF PUMP, RELIEVE FLUID PRESSURE FROM SYSTEM BY RETRACTING TRIGGER TO "ON" POSITION UNTIL ALL FLUID CEASES TO FLOW. WHEN SPRAYING HOT LIQUIDS, OPERATOR MUST BE CAUTIOUS TO AVOID BODY CONTACT WITH THE NON-INSULATED PARTS OF GUN, EXTENSION, ETC. . . .

MODEL NO.	INLET CONNECTION	OUTLET CONNECTION	OVERALL LENGTH
60-3/8-SS	3/8" NPT(F)	1 1/16"-16 THD. TO FIT #7890-SS TIP RETAINER	8-3/4" (222 mm)
#60M-3/8-SS	3/8" BSPT(F)	#7890-SS TIP RETAINER	(222 mm)
#860M-3/8-SS	3/8" BSPT(F)		

*MODEL NOS. 60M- & 860M- WITH "MEEPT" FEATURE (TO MINIMIZE CHANCE OF FREEZING) ARE ALSO AVAILABLE WITH THE SAME FEATURES AS TABULATED.

DESCRIPTION: NO. 60-3/8-SS HIGH PRESSURE GUNJET SPRAY GUN

Spraying Systems Co.
 Spray Nozzles and Accessories
 P.O. Box 7800 - Wilmington, IL 60189-7800

Rev. No. _____ Data Sheet No. **60-SS**

Ref. _____ SHEET OF _____



Spraying Systems Co.[®]

Experts in Spray Technology

North Avenue and Schmale Road, P.O. Box 7900,
Wheaton, IL 60187-7901

Tel: 1.800.95.SPRAY

Intl. Tel: 1.630.665.5000

Fax: 1.888.95.SPRAY

Intl. Fax: 1.630.260.0842

www.spray.com

